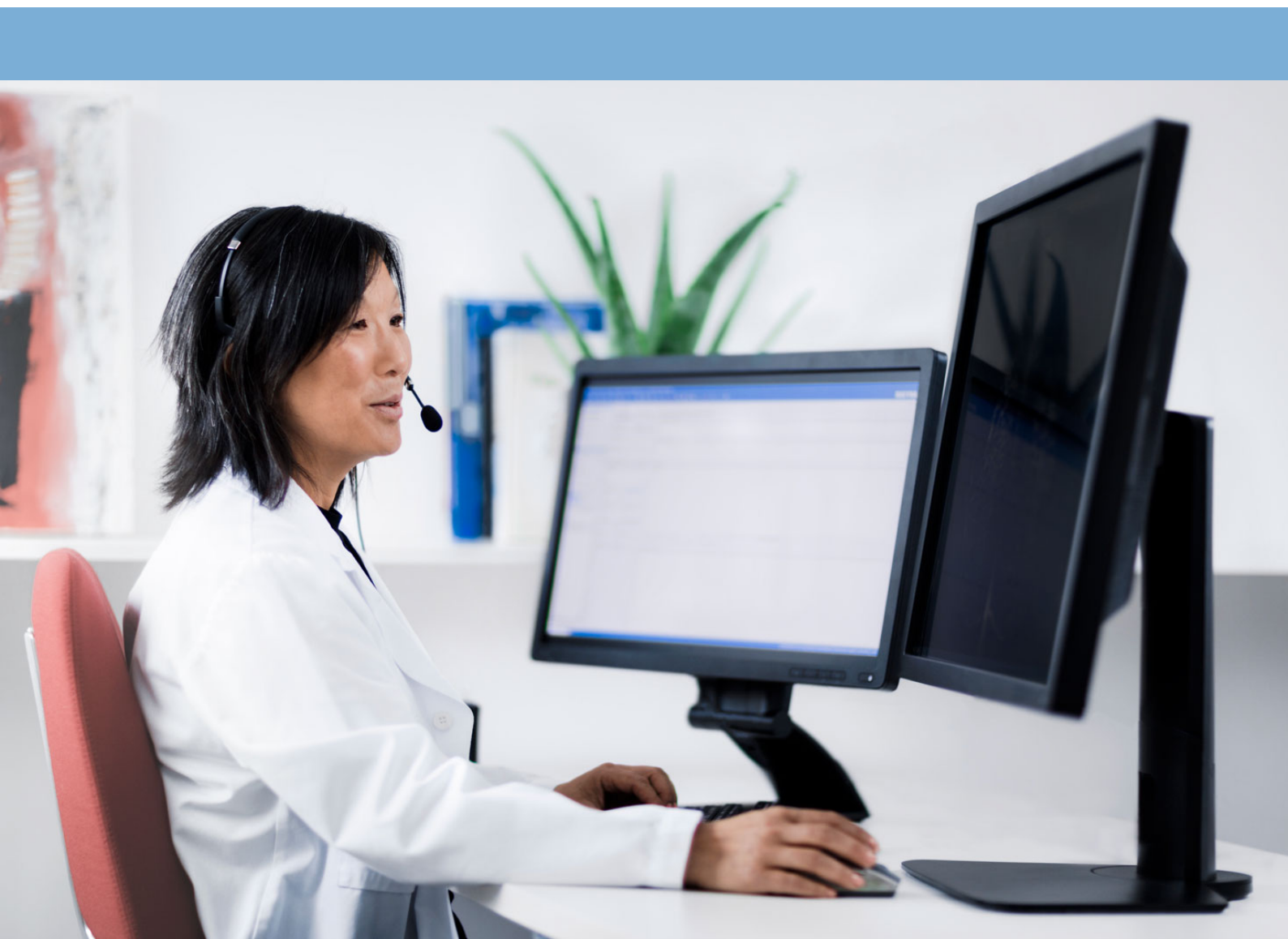


# IHE Integration Statement

## Sectra PACS and Sectra VNA

Sectra PACS, Version 19.1, March 2017



# SECTRA

*Knowledge and passion*

---

# Contents

---

<b>1</b>	<b>Introduction</b> .....	<b>1</b>
<b>2</b>	<b>About IHE</b> .....	<b>2</b>
2.1	Integrating the Healthcare Enterprise (IHE) .....	2
2.2	<b>References</b> .....	2
<b>3</b>	<b>IHE integration statement</b> .....	<b>4</b>

---

# 1 Introduction

---

The Integrating the Healthcare Enterprise (IHE) Integration Statement was developed as a high-level statement of integration for products, which were intended to interoperate, based on IHE Integration Profiles. This document identifies the IHE Actors, IHE Integration Profiles and options Sectra AB has implemented in each product version.

The Sectra IHE Integration Statement has been created to assist the reader in determining whether and to what extent interoperability with other vendors might be supported.

The IHE Technical Framework specifies a subset of the working mechanism of the healthcare enterprise and defines their exchanges in terms of a set of coordinated transactions. The actors and transactions expressed in the IHE Technical Framework are generalizations of actual healthcare information system environments. While some of the transactions are customarily carried out by specific product groups (e.g. HIS, RIS, PACS, or modalities), the IHE Technical Framework purposely avoids relating functions or actors with such product groups. For each actor, the IHE Technical Framework identifies only those functions linked with integrating information systems. The IHE definition of an actor should not be interpreted as the absolute definition of any product that might implement that particular actor. In addition, the framework itself should not be taken as the absolute definition of healthcare information system architecture.

This IHE Integration Statement affords the reader with a sophisticated view of supported IHE integration profiles. For further exploration, additional information can be found in the DICOM and HL7 Conformance Statements of this product and in the IHE Technical Framework.

This IHE Integration Statement does not guarantee successful interoperability of this product with other vendor's products. It is the user's responsibility to thoroughly analyze the application requirements and to specify a solution that integrates the Sectra PACS or Sectra VNA with other vendor's software and systems.

---

## 2 About IHE

---

The following topics are included in this chapter:

- [Integrating the Healthcare Enterprise \(IHE\)](#)
- [References](#)

### 2.1 Integrating the Healthcare Enterprise (IHE)

IHE is a multi-year initiative undertaken by medical specialists, administrators, information technology professionals and manufacturers, sponsored by the Radiological Society of North America (RSNA) and the Healthcare Information and Management Systems Society (HIMSS), whose sole purpose is to improve the way computer systems in healthcare share information.

IHE is not a standards organization. Instead it promotes coordinated use of existing standards such as DICOM and HL7 to develop workflow solutions for the healthcare enterprise. Systems designed in agreement with IHE profiles communicate with one another better, are easier to implement, and facilitate the efficient access of information. Physicians, nurses, administrators and other healthcare professionals foresee a day when vital information can flow seamlessly from system to system and be readily available at the point of care. IHE is intended to make this vision a reality by improving the condition of systems integration and eliminating barriers to optimal patient care.

Though begun in the USA, the IHE is a world wide initiative. The Regional IHE Initiatives currently encompass IHE – Asia Oceania, IHE – EU (Europe) and IHE – NA (North America). The National and Regional IHE Initiatives coordinate the deployment of the IHE Technical Framework and Integration Profiles and give input to their development related to local needs and issues. They are sponsored and overseen by relevant national/regional professional associations and include membership and staff of these groups as well as local vendor representatives. These groups may rely on funding from other organizations (e.g., governmental bodies or foundations) and are responsible for securing and managing any such funds.

### 2.2 References

General IHE information:

- IHE home: <http://www.ihe.net>
- In North America: [www.rsna.org/IHE](http://www.rsna.org/IHE)
- Europe: <http://www.ihe-europe.org>
- Japan: <http://www.jira-net.or.jp/ihe-j>

Vendor's IHE information:

- <http://www.sectra.com/medical/IHE>

Vendor's DICOM Conformance Statement

- <http://www.sectra.com/medical/DICOM>

Vendor's HL7 information:

- <http://www.sectra.com/medical/hl7>

## 3 IHE integration statement

Vendor	Product Name	Version	Date
Sectra AB	Sectra PACS and Sectra VNA	19.1	2017-03-11

This product implements all transactions required in the IHE Technical Framework to support the IHE Integration Profiles, Actors and Options listed below:

Integration Profile Implemented	Actors Implemented	Options Implemented
<b>Cardiology Domain</b>		
Cardiac Catheterization Workflow (CATH)	Image Manager/Image Archive	None
Echocardiography Workflow (ECHO)	Image Manager/Image Archive	None
<b>IT Infrastructure Domain</b>		
Patient Identifier Cross-Referencing (PIX)	Patient Identifier Cross-reference Consumer	PIX Update Notification
Consistent Time (CT)	Time Client	None
Audit Trail and Node Authentication (ATNA)	Secure Application	None
	Audit Record Repository	None
Cross Enterprise Document Sharing (XDS.b)	Document Registry	Patient Identity Feed, Reference ID, Document Metadata Update
	Document Repository	None
	Document Consumer	None
	Document Source	None
	Document Administrator	Delete Metadata
Cross-Community Access (XCA)	Initiating Gateway	Affinity Domain
	Responding Gateway	None
Patient Demographics Query HL7 V3 (PDQV3)	Patient Demographics Consumer	None
<b>Radiology Domain</b>		
Scheduled Workflow (SWF)	Image Manager/Image Archive	None
	Performed Procedure Step Manager	None
Patient Information Reconciliation (PIR)	Image Manager/Image Archive	None
	Performed Procedure Step Manager	None

Integration Profile Implemented	Actors Implemented	Options Implemented
Consistent Presentation of Images (CPI)	Image Manager/Image Archive	None
Access to Radiology Information (ARI)	Image Manager/Image Archive	None
Key Image Note (KIN)	Image Manager/Image Archive	None
Reporting Workflow (RWF)	Image Manager/Image Archive	None
	Performed Procedure Step Manager	None
Evidence Documents (ED)	Image Manager/Image Archive	None
Portable Data for Imaging (PDI)	Image Display	None
	Portable Media Importer	None
	Portable Media Creator	Web content
NM Image (NM)	Image Manager/Image Archive	None
Teaching File and Clinical Trial Export (TCE)	Receiver	None
Cross Enterprise Document Sharing for Imaging (XDS-I.b)	Imaging Document Source	Set of DICOM Instances
	Imaging Document Consumer	None
Mammography Image (MAMMO)	Image Manager/Image Archive	None
	Image Display	None
Imaging Object Change Management (IOCM)	Change Requester	None
Cross-Community Access for Imaging (XCA-I)	Initiating Imaging Gateway	None
	Responding Imaging Gateway	None
Digital Breast Tomosynthesis (DBT)	Image Manager/Image Archive	None
	Image Display	None

## LABEL

Product	Sectra Workstation
Model	IDS7
Version	19.1
UDI	(01)07350092810036(8012)19.1
Manufacturer	Sectra AB Teknikringen 20 SE-58330 Linköping Sweden <a href="http://www.sectra.com">www.sectra.com</a>
Contact	<a href="http://www.sectra.com/medical/contact/support/">www.sectra.com/medical/contact/support/</a>



## Regulatory Clearance Statement

The quality system of Sectra AB [Sectra] conforms to ISO 9001, ISO 13485 and ISO 27001. All Sectra medical devices have obtained regulatory clearance for those markets where Sectra sells and deploys its devices, e.g. EEA, USA, Canada, Australia. For further regulatory information please contact Sectra.

## Disclaimer

Sectra AB is not responsible for problems caused by changes in the operating characteristics of the computer hardware or operating system, which are made after the delivery of the software, or for problems that occur as a result of the use of Sectra software in conjunction with non-Sectra software other than the software explicitly covered in this documentation. For a complete description of warranty, refer to the End User License Agreement supplied with the Sectra product.



## Trademark and Patent Disclaimer

Sectra, Sectra Imtec and the Sectra logotype, are registered trademarks of Sectra AB. FIMAG and Image Exchange Portal are registered trademarks of Burnbank Systems Ltd in the UK. IDS7, Sectra BizTrack, Sectra CloudFlex, Sectra DoseTrack, Sectra IEP, Sectra Image Central, Sectra Image Lab, Sectra LiteView, Sectra UniView, Sectra One Connect, Sectra Open Archive, Sectra VNA, Sectra UserInfluence, and WISE are trademarks of Sectra Imaging IT Solutions AB. Sectra Preop Online and Sectra OneScreen are trademarks of Sectra AB. RxEye is a registered trademark of RxEye AB.

*Windows* is a registered trademark of Microsoft Corporation in the United States and other countries. *Mac*, *Safari*, and *iPad* are registered trademarks of Apple Inc. in the United States and other countries. All other names/products by ® or ™ are registered trademarks of the respective manufacturer.

The intellectual property of Sectra includes the following patents: U.S. patents 6,005,917; 6,226,393; 6,411,729; 6,763,257; 7,162,623; 7,532,214; 7,660,461; 7,689,539; 7,830,381; 7,936,930; 7,940,270; 8,131,033; 8,295,620; 8,693,752; 8,880,143; 9,053,574; 9,146,674; 9,265,472; 9,412,162. Japanese patent 3646122. European patents 0818971; 1046374; 2512341. Swedish patents 0203545; 0300951. Patents Pending in the U.S. and other countries.

## Copyright and Legal Statement

© Sectra AB, Sweden, 2017

All rights are reserved. Reproduction or transmission in whole or part, in any form or by any means, electronic, mechanical or otherwise, is prohibited without written consent of the copyright owner.

Copyrights and all other proprietary rights in any software and related documentation ("Software") made available to you rest exclusively with Sectra AB. No title or ownership in the Software is conferred to you. Use of the Software is subject to the end user license conditions as are available on request.

To the maximum extent permitted by law, you shall not decompile and/or reverse engineer the software or any part thereof.

**Sectra AB**  
Teknikringen 20  
SE-58330 Linköping  
Sweden  
Phone: +46 13 23 52 00  
E-mail: info@sectra.se

# SECTRA

*Knowledge and passion*